

## CRUISE REPORT

### HELMER HANSEN 07.01-24.01.2016

I took part in research cruise on Helmer Hansen ship. My task was photographing organisms living on the seabed near the glaciers fronts using Lander. I was able to gather interesting research material at 10 stations located in the Isfjorden, Kongsfjorden, Magdalenfjorden, Smeerenburgfjorden and in Rijpfjorden (Fig. 1). In Rijpfjorden I took only one station but sea bottom here is very interesting. There was here a lot of brittle stars mainly *Ophiura sarsi*, *Ophiophoric acuelata*, and a single big red starfish *Urasterias lincki* and predatory *Diplopteraster multipes* (Fig. 2, Fig. 3). In Kongsfjorden and Billefjorden I also collected interesting material (Fig. 4, Fig. 5). The film material filmed on the bottom, was recorded for further analysis.

In addition to the tasks associated with the collection of material needed to complete my dissertation, I helped the other participants of the cruise. In Trygghamna archaeologists made an inspection of the wreck Figaro. Scientists launched and tested Jetjak - a special remote controlled kayak that can be used for measurements in the immediate vicinity of the glacier. During the cruise I observed how to operate the vehicle ROV and sampling plankton. Every evening there were also interesting lectures, among others about underwater archeology and robotics, during which I learned a lot of interesting things.

My participation in the research cruise on the vessel Helmer Hanssen significantly increased exceedingly my knowledge and experience, and the possibility of working with excellent experts from different countries was a great honor.

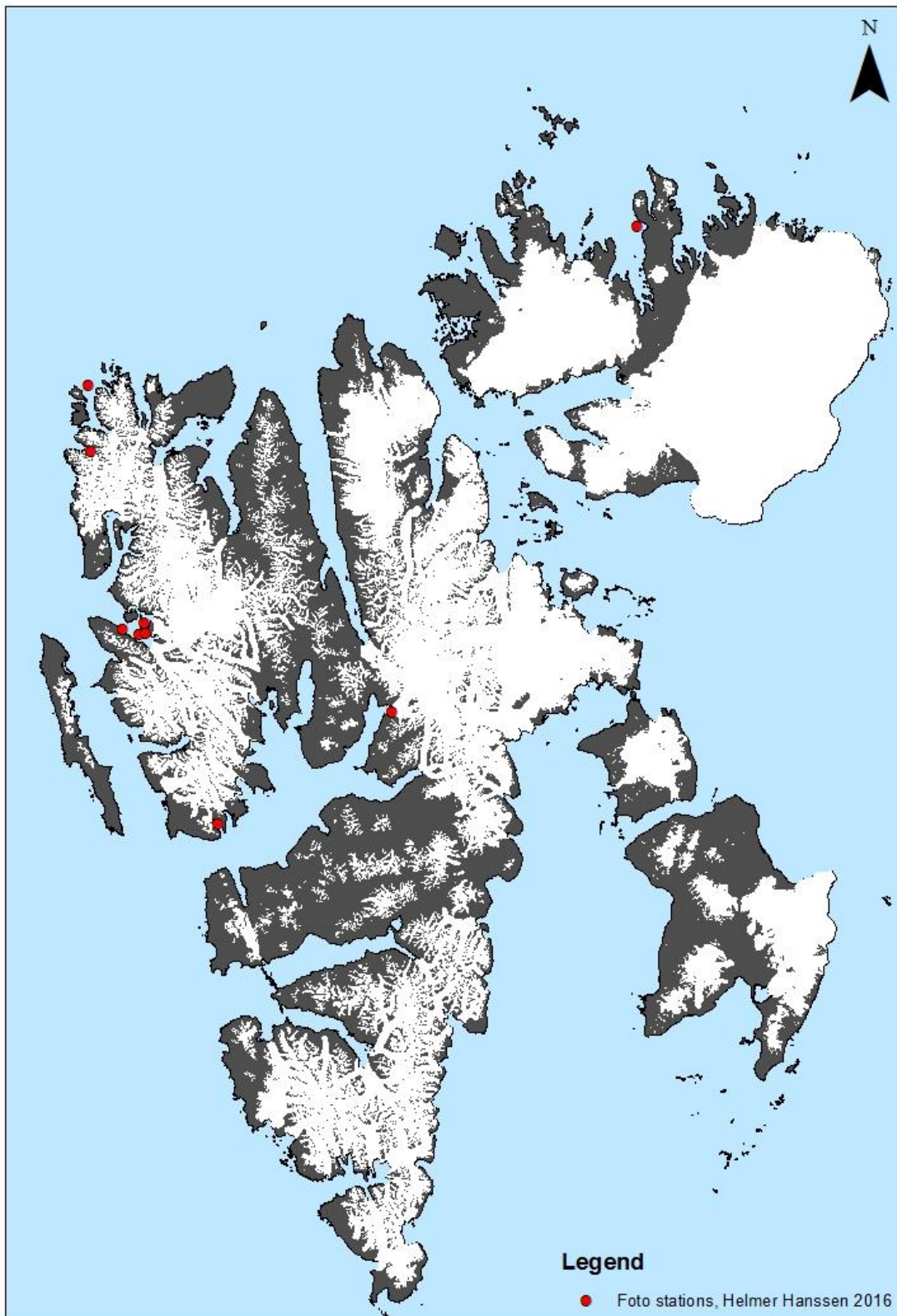


Fig. 2 Locations of foto stations taken during the cruise.



Fig. 2 Sea bottom in Rijpfjorden.

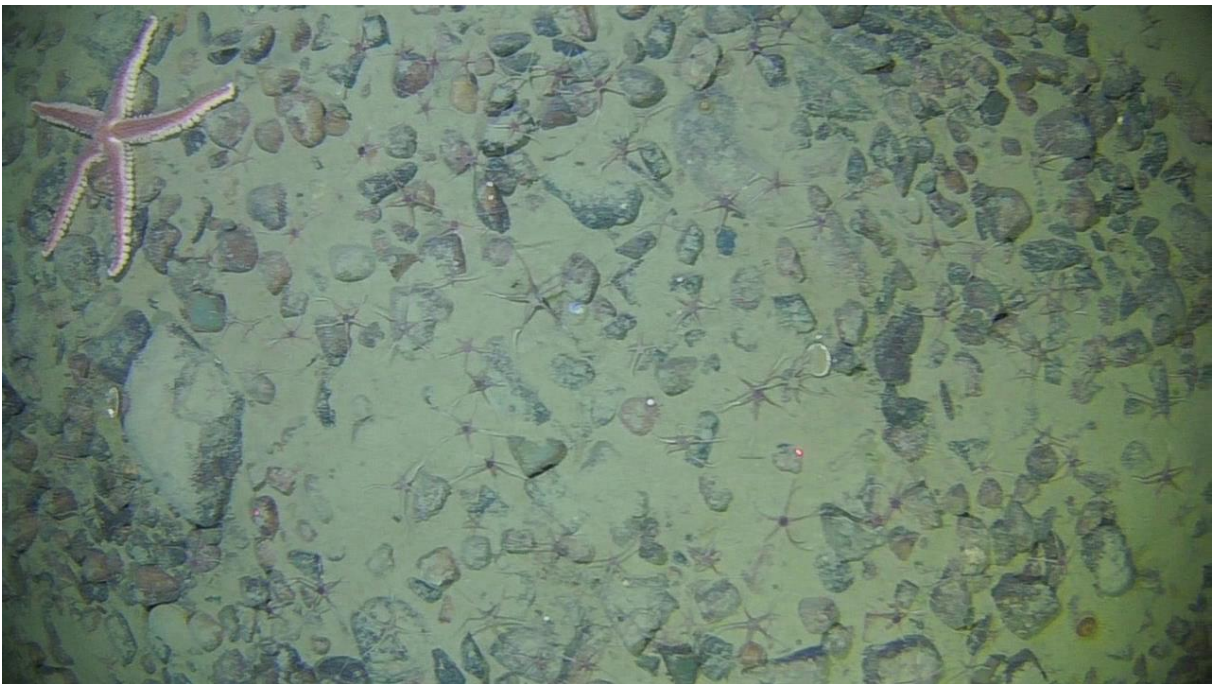


Fig. 3 Sea bottom in Rijpfjorden.



Fig. 4 Sea bottom in Kongsfjorden



Fig. 5 Sea bottom in Billefjorden.

The participation of MSc Kajetan Deja was partially financed from the funds of the Leading National Research Centre (KNOW) received by the Centre for Polar Studies for the period 2014-2018.

Kajetan Deja *Kajetan Deja*